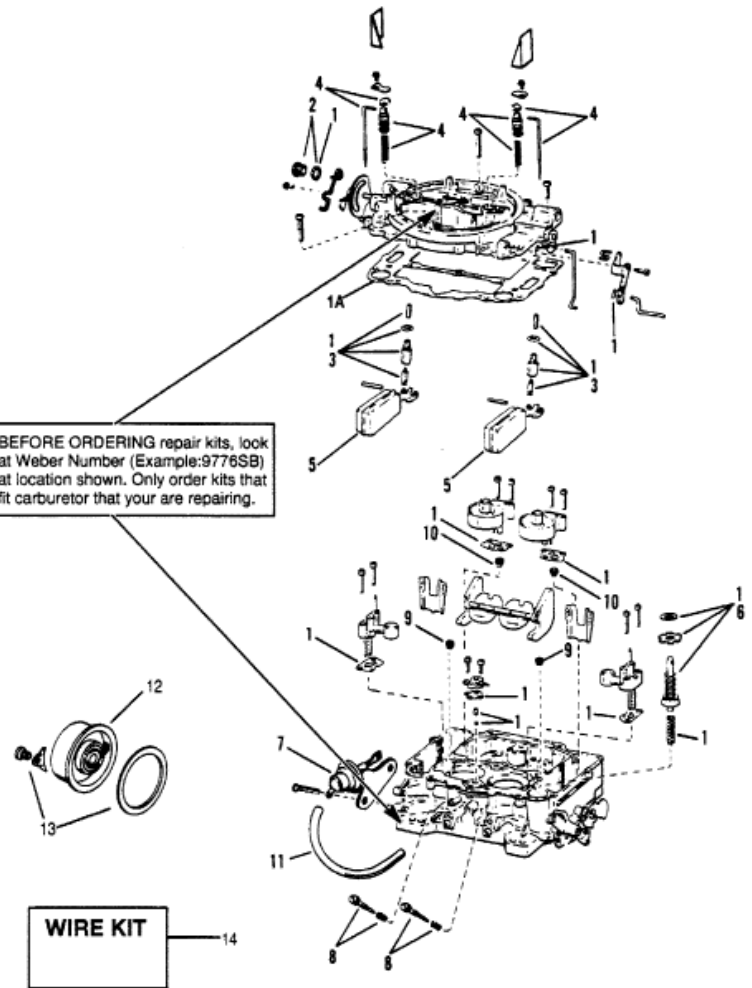


BEFORE ORDERING repair kits, look at Weber Number (Example:9776SB) at location shown. Only order kits that fit carburetor that you are repairing.



| Parts List | | | | | | |
|------------|-------|-----------|-------------------------------|-----|---------|----------|
| Ref | Class | Part | Description | Qty | Comment | Footnote |
| 1 | | 809064 | OVERHAUL KIT (ALL) | 1 | | |
| 1A | 27 | 809077 | GASKET (ALL) | 1 | | |
| 2 | | 811533 | INLET FITTING KIT (ALL) | 1 | | |
| 3 | | 811534 | INLET NEEDLE & SEAT KIT (ALL) | 2 | | |
| 4 | | 823431 | METERING ROD KIT (ALL) | 1 | | |
| 5 | | 811536 | FLOAT KIT (ALL) | 2 | | |
| 6 | | 808701 | PUMP PLUNGER KIT (ALL) | 1 | | |
| 7 | | 811538 | CHOKE PULL DOWN KIT (AUTOM) | 1 | | |
| 8 | | 811539 | IDLE MIXTURE SCREW KIT (ALL) | 2 | | |
| 9 | | 823432 | PRIMARY METERING JET (ALL) | 2 | | |
| 10 | | 811650 | SECONDARY METERING JET (AL | 2 | | |
| 11 | 32 | 14301 65 | VACUUM HOSE (AUTOMATIC CH | 1 | | |
| 12 | | 809066 | ELECTRIC CHOKE REPAIR KIT (E | 1 | | |
| 13 | | 809095 | ELECTRIC CHOKE RETAINER KIT | 1 | | |
| 14 | 84 | 809471A 1 | WIRE KIT (ELECTRIC CHOKE) | 1 | | |